

Head Office:
Dixon Kelley Estate Agents
1 Penn Court
Station Road, West Moors
Dorset. BH22 0JJ

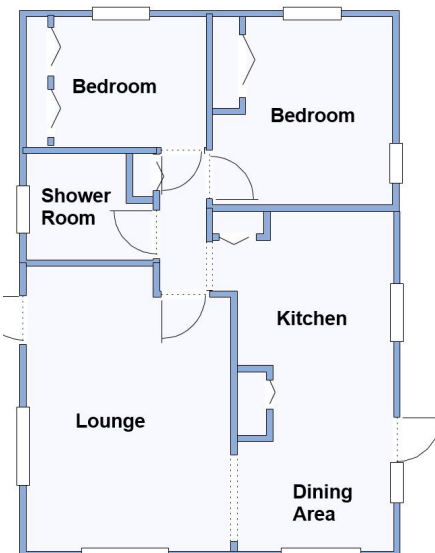
DORSET PARK HOMES

DRAFT

www.dorsetparkhomes.com

Telephone: 01202 877511

17 Pilgrims Park, Southampton Road, Poulner, Ringwood. BH24 1TQ



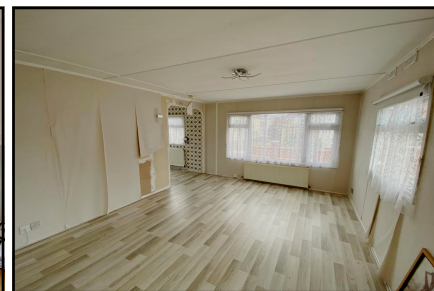
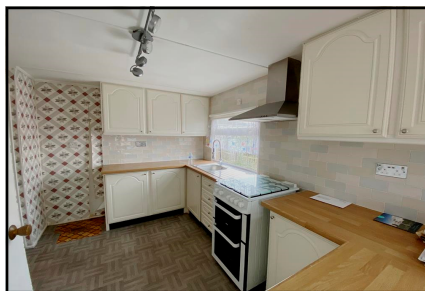
This drawing has been prepared for diagrammatic purpose only. Not to scale.

2-Bedroom Park Home - approx 28' x 20'

Accommodation & approximate room dimensions:

- Omar Park Home
- Hall: Cloaks cupboard
- Kitchen/Diner: approx 17'7" x 8'2". Range of floor & wall cupboards. Space for oven with cooker hood over. Space for fridge/freezer & washing machine. Cupboard housing combination gas boiler. Door to garden.
- Lounge: approx 14'9" x 10'8". Door to garden.
- Bedroom 1: approx 9'9" x 9'4". Fitted wardrobes.
- Bedroom 2: approx 9'4" x 6'9". Built-in wardrobes.
- Shower Room: Modern suite comprising walk-in shower cubicle. Vanity wash basin & WC. Chrome heated towel rail.
- Gas Central Heating (system untested)
- PVCu Double-Glazing
- Garden with patio area.
- Parking on Plot
- Age Restriction 45+ Pets considered
- No Chain!
- Small Residential Park close to local amenities & near to Ringwood Town Centre & New Forest

Close to amenities



Pitch Fee: approx £230 per month

Subject to Annual Review

Council Tax Band: 'A' Tenure: 1983 Mobile Homes Act Agreement

Price: £130,000

VIEWING STRICTLY BY APPOINTMENT WITH THE VENDOR'S AGENT Dorset Park Homes 01202 877511

IMPORTANT NOTE: These particulars are believed to be correct but their accuracy is not guaranteed. They do not form part of any contract. Nothing in these particulars shall be deemed to be a statement that the property is in good structural condition or otherwise, nor that any of the services, appliances, equipment or facilities are in good working order or have been tested. Purchasers should satisfy themselves on such matters prior to purchase Ref.W04668

The recommended specialist in Park Home sales
Partner: Simon Dixon

